



Single Login Process Performance Program Website

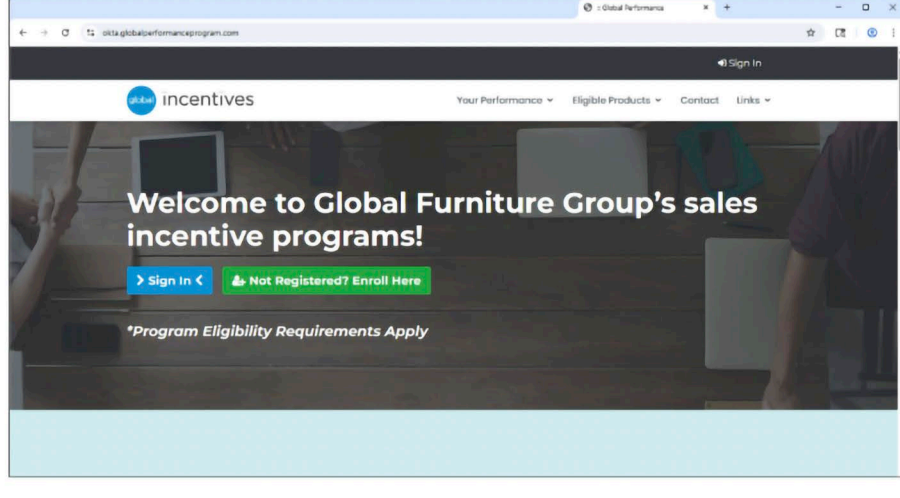
Earlier this year, we integrated several dealer platforms into a single set of login credentials, making your online experience smoother and more efficient. We're excited for the next phase launching **Monday, December 15th**, the integration of the Global Performance Program website.

With this new single login process, users will benefit from:

- Simplified access — one password for all Global web properties
- Seamless navigation — log on once, and access all integrated platforms without re-entering credentials

What to Expect:

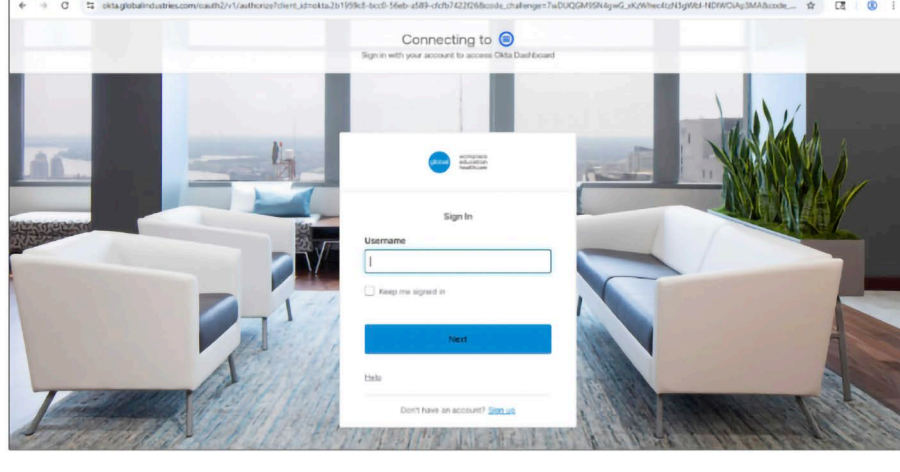
Step 1.



If you are not actively using the Dealer Website or Global Express Store, you will need to create an Okta account using your professional eMail address. To register with your professional eMail address, visit the Performance Program website and click “Not Registered? Enroll Here”.

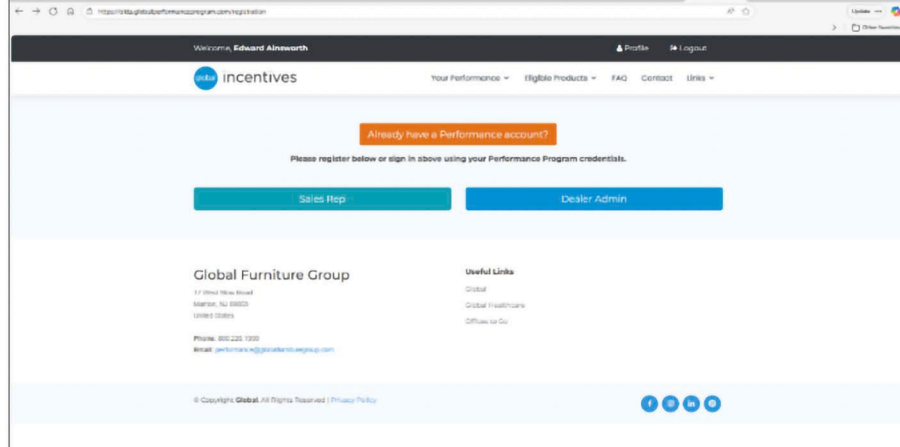
If you are an active user in the Dealer Website or Global Express Store and have already created an Okta account, clicking Sign In will allow you to enter your credentials and skip to **step 3**.

Step 2.



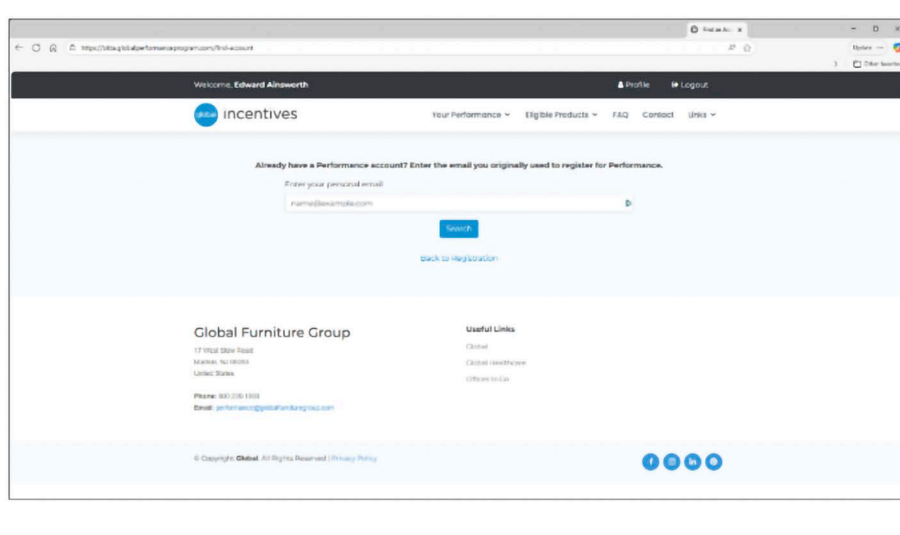
Click on the “Sign Up” link at the bottom of the login screen and complete the registration form.

Step 3.



Click on ‘Already have a Performance Account’.

Step 4.

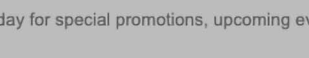


Follow the prompt to enter the eMail address originally used to register for the Performance Program. You will receive an eMail with a confirmation link that will complete the association between your professional eMail address and the Performance Program website.

After your email address has synced with the website, it will serve as your login credential across all three platforms.

If you have any questions or issues, please reach out to us at

loginsupport@globalfurnituregroup.com



Visit our social media pages today for special promotions, upcoming events, company news and more!

Please use the [contact section](#) of the website to send us a note.

To ensure delivery of our eMails to your inbox, please add Global@GlobalFurnitureGroup.com to your address book..

This is an outbound eMail only. We will be unable to respond to replies sent to this address.

You are currently subscribed to the Global email list as [lead.emailaddress1](#).

If you prefer not to receive product information, updates and/or promotions messages from us, [click here](#)

© 2025 Global Furniture Group, GLOBAL Upholstery Co. Inc., GLOBAL Industries, Inc. ALL RIGHTS RESERVED.

[Terms of Service](#) | [Privacy Policy](#) | [Patents](#) | [Trademarks](#) | [Copyright & Legal Info](#)